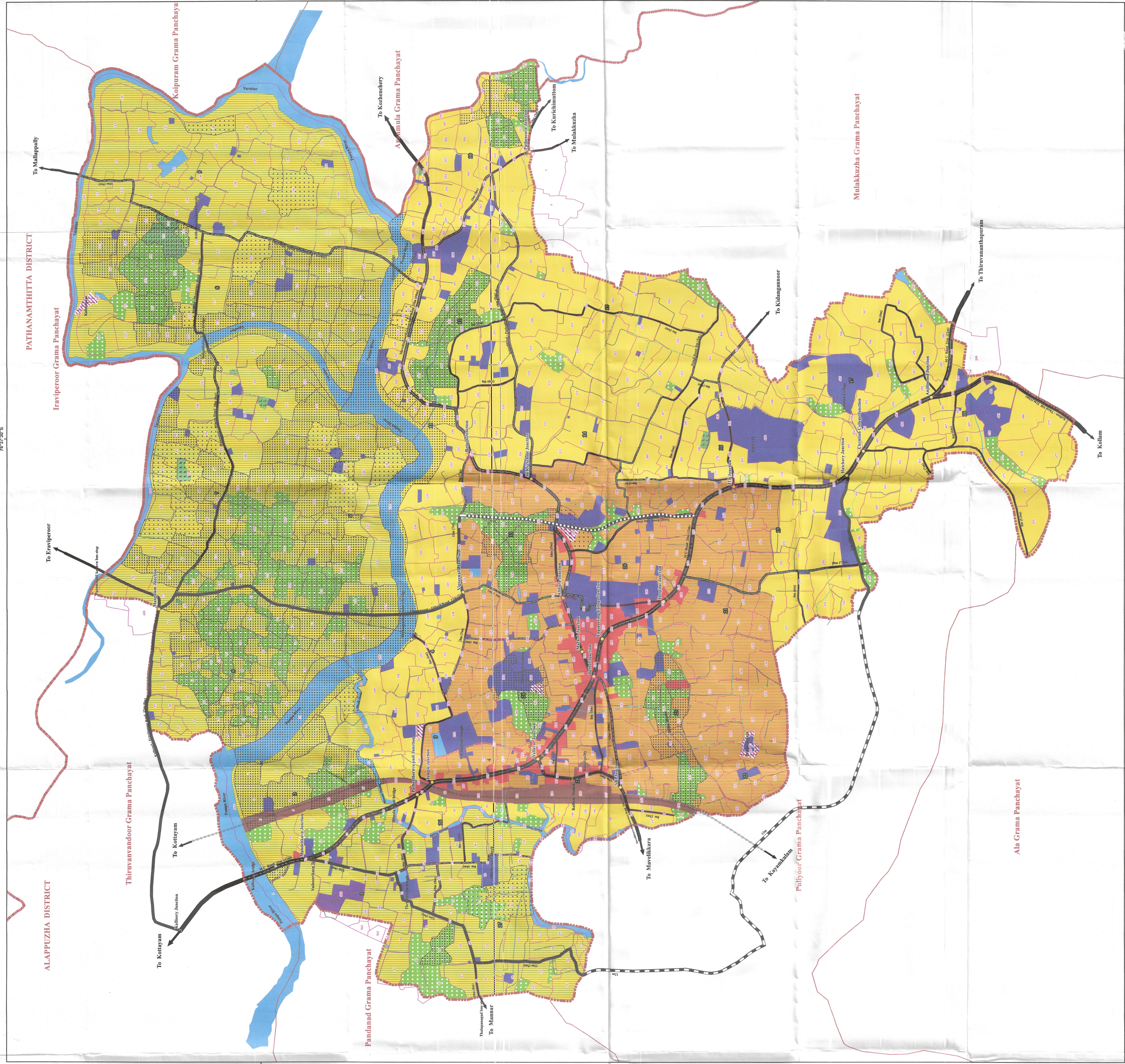


ALAPPUZHA DISTRICT



7°37'0"E

7°37'0"E

PATHANAMTHITTA DISTRICT

Irisiperoor Grama Panchayat

Thiruvananthoor Grama Panchayat

To Kottayam

To Kottayam

To Kottayam

To Kottayam

To Kottayam

To Kottayam

To Kottayam

To Kottayam

To Kottayam

To Kottayam

To Kottayam

To Kottayam

To Kottayam

To Kottayam

To Kottayam

To Kottayam

To Kottayam

To Kottayam

To Kottayam

To Kottayam

To Kottayam

To Kottayam

To Kottayam

To Kottayam

To Kottayam

To Kottayam

To Kottayam

To Kottayam

To Kottayam

To Kottayam

To Kottayam

To Kottayam

To Kottayam

To Kottayam

To Kottayam

To Kottayam

To Kottayam

To Kottayam

To Kottayam

To Kottayam

To Kottayam

To Kottayam

To Kottayam

To Kottayam

To Kottayam

To Kottayam

To Kottayam

To Kottayam

To Kottayam

To Kottayam

To Kottayam

To Kottayam

To Kottayam

To Kottayam

To Kottayam

To Kottayam

To Kottayam

To Kottayam

To Kottayam

To Kottayam

To Kottayam

To Kottayam

To Kottayam

To Kottayam

To Kottayam

To Kottayam

To Kottayam

To Kottayam

To Kottayam

To Kottayam

To Kottayam

To Kottayam

To Kottayam

To Kottayam

To Kottayam

To Kottayam

To Kottayam

To Kottayam

To Kottayam

To Kottayam

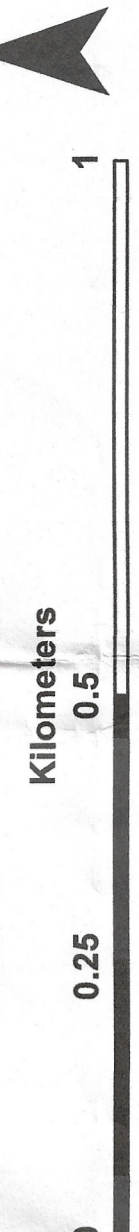
To Kottayam

To Kottayam

MASTER PLAN FOR CHENGANNUR TOWN - 2041

PROPOSED LAND USE MAP - MP/02/1

SCALE = 1:7,000



LEGEND

- District Boundary
Municipal Boundary
Panchayat Boundary
Ward Boundary
Survey Boundary
Railway line
Canal
Junctions
Junction Improvement
Proposed Foot Over Bridge

ROADS

- Existing to be widened to 21 m
Existing to be widened to 15 m
Existing to be widened to 12 m
Existing to be widened to 10 m
Existing to be widened to 8 m
Bypass Ring Road to be widened to 12m
Proposed New Bypass Link Road 12m wide
Other Existing Roads

PROPOSED LAND USE

- Residential Use Zone
Residential Mix Use Zone
Commercial Use Zone
Industrial Use Zone
Public & Semi Public Use Zone
Agriculture cum Residential Use Zone
Traffic & Transportation Use Zone
Park & Open Spaces Use Zone
Ecological Conservation Zone
Water bodies

SPECIAL USE ZONES

- 1 : Eco Tourism Spot 1
2 : Eco Tourism Spot 2
3 : Liquid Waste Treatment Plant
4 : Pilgrim Amenity Centre
5 : Parking Area

FLOOD PRONE AREA

- Flood Prone Area I - Inundation Depth 0.6m to 1.5m
Flood Prone Area II - Inundation Depth Above 1.5 m

CHENGANNUR MUNICIPALITY
LOCAL SELF GOVERNMENT DEPARTMENT (PLANNING)
ALAPPUZHA DISTRICT
SECRETARY
CHAIRPERSON
DRAFTSMAN
ASSISTANT TOWN PLANNER
DEPUTY TOWN PLANNER
TOWN PLANNER
SENIOR TOWN PLANNER
LOCAL SELF GOVERNMENT DEPARTMENT (PLANNING)
GOVERNMENT OF KERALA
ANUPAMATY IAS
SECRETARY, LOCAL SELF GOVERNMENT DEPARTMENT